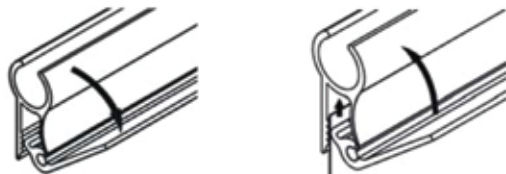


Installation of Graphic

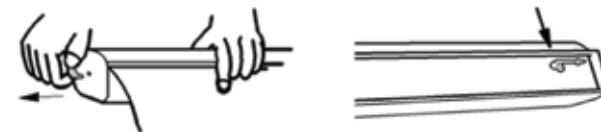
1. Open the cover of the clamp top trim, insert the graphic into the clamp top trim, and then close the cover. Ensure the graphic is securely attached.



2. Remove the protective cover of adhesive tape on the leader paper, stick the other end of graphic with picture side facing upwards to the leader paper and press it firmly. And then, stick extra adhesive tape over the joints on the both sides to enforce.



3. Hold on graphic firmly meanwhile removing the key from the base and slowly allow the graphic to retract into base. Replace key on the base bottom.



Set Up Installation

1. Rotate stable foot 90°. Remove the pole from the banner stand base.



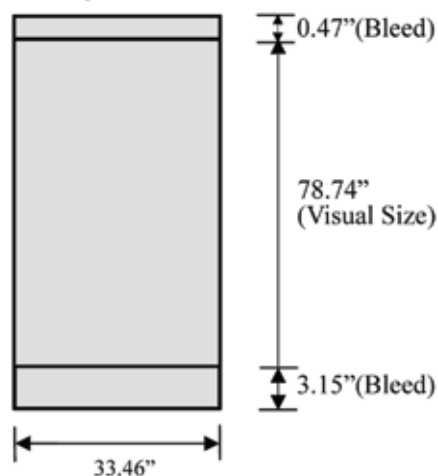
2. Connect pole sections into a long pole. Insert pole into the hole on the base.



3. Roll the graphic up completely, and insert the hook at the top trim into pole.



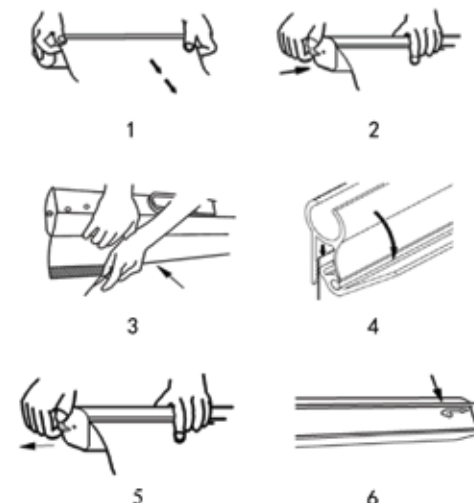
Size of Graphic



Suggested: The image should be 3.15" longer than visual size. It will be rolled into the banner stand. Graphic thickness ≤ 0.014 "

Change the Image

1. Remove the key from the bottom of the base and pull out the graphic as long as possible until the leader paper out of the housing.
2. Insert key into the hole on the base to lock the graphic.
3. Remove the old graphic from the leader paper. Along the black line, attach new double sided adhesive tape. Remove the protective cover of adhesive tape, stick the new graphic with picture side facing upwards on the leader paper and press it firmly. And then, stick extra adhesive tape over the joints on the both sides to enforce.
4. Remove the old graphic from the clamp top trim. Insert the new graphic into the clamp top trim. Ensure the graphic is securely attached.
5. Hold on graphic firmly meanwhile removing the key from the base and slowly allow the graphic retract into base.
6. Replace key on the base bottom.



WARNING To avoid losing tensing problem you have to:
 Please don't remove the key from the plate until you complete the graphic installation.
 Ensure the graphic top end is securely attached into the clamp top trim.
 Ensure to stick extra adhesive tape over the joints on the both sides of graphic end and leader paper.